



# Finalizing the Climate Paper

Wrapping up a few details....

# 1<sup>st</sup> –stormwater section

- I will be sending the new language to those who commented on it around to make sure changes represent their concerns (Brian A., Doug N., Jenee C.)



## 2<sup>nd</sup> Summer Hydrology section

Someone wanted to change the language here

hypertonic exchange that could moderate maximum temperatures. ¶

- → Studies have shown that young tree stands (<100 years) can decrease summer base flows by almost half.

Work with forestry managers and researchers to ~~investigate longer~~ understand how the cycle of stand rotations and selective logging ~~to improve~~ affect basin hydrology (Perry and Jones 2016). ¶

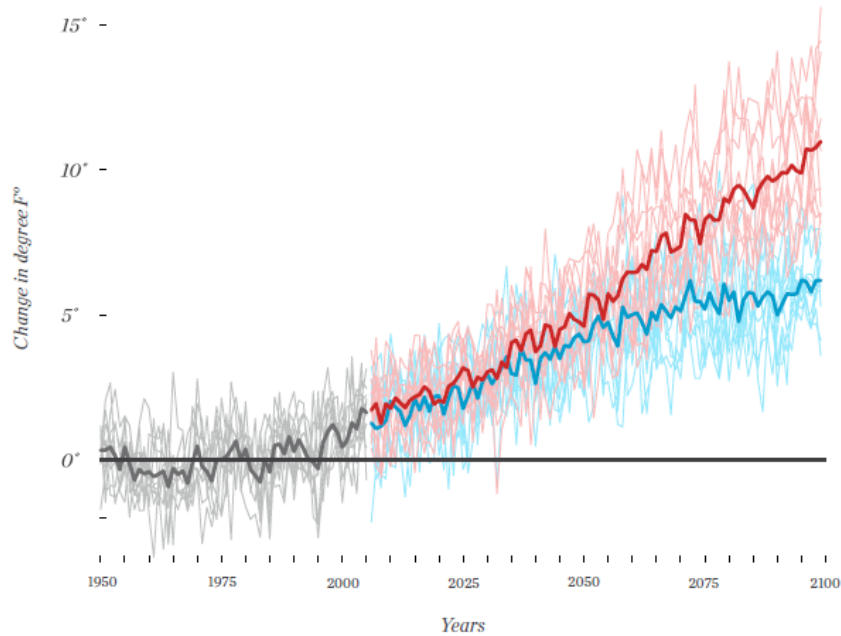
temperature ¶

I would like to keep original language.

*Thoughts?*

**AVERAGE ANNUAL TEMPERATURES IN THE PUGET SOUND REGION ARE PROJECTED TO INCREASE RAPIDLY IN THE COMING DECADES**

{ Temperature difference relative to 1950-1999 average }



The graph shows average annual air temperatures projected by climate models, relative to the average for 1950-1999 (horizontal gray line; the average annual temperature for the Puget Sound region is 44°F). Thin colored lines show individual climate model projections; thick colored lines show the averages of the models. Data source: Downscaled climate projections

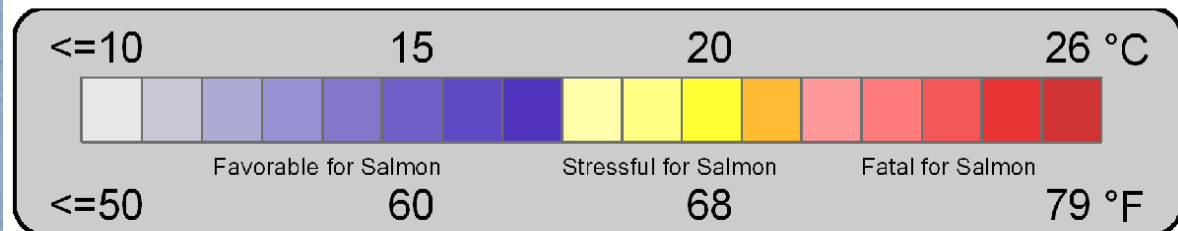
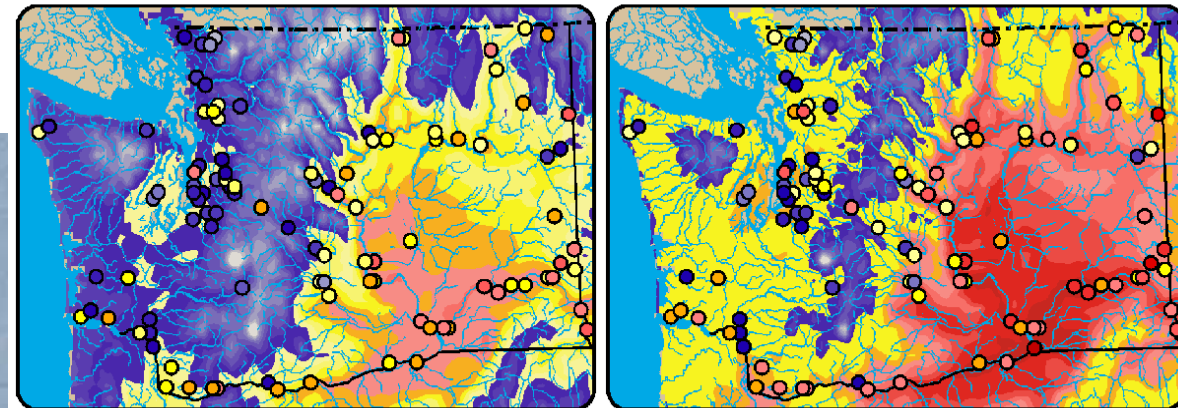
- HISTORICAL
- LOW EMISSIONS (RCP 4.5)
- HIGH EMISSIONS (RCP 8.5)

3<sup>rd</sup> We currently have these two graphics. I want to simplify

**August Mean Surface Air Temperature and Maximum Stream Temperature**

**Historical (1970-1999)**

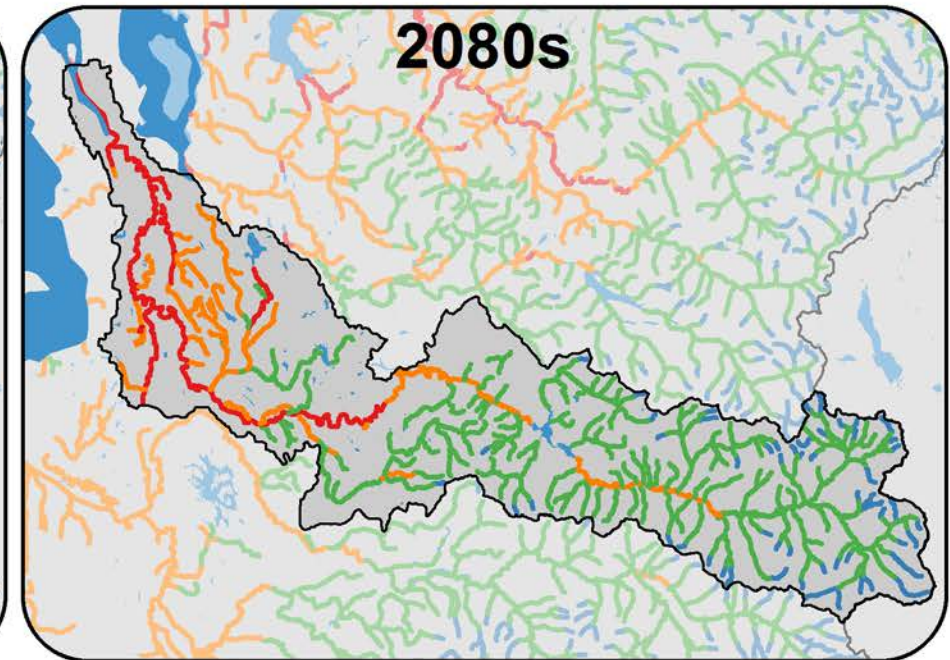
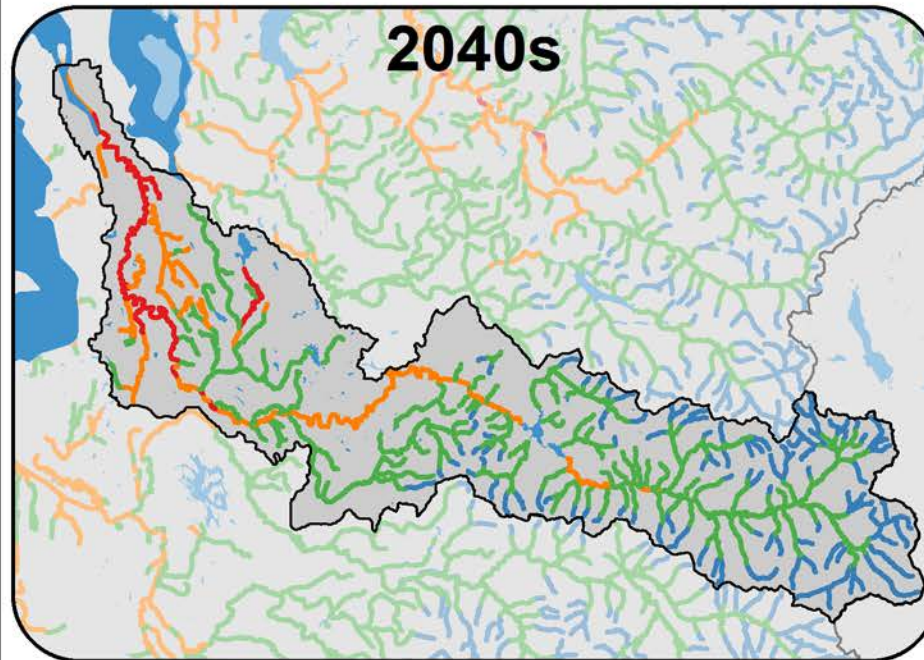
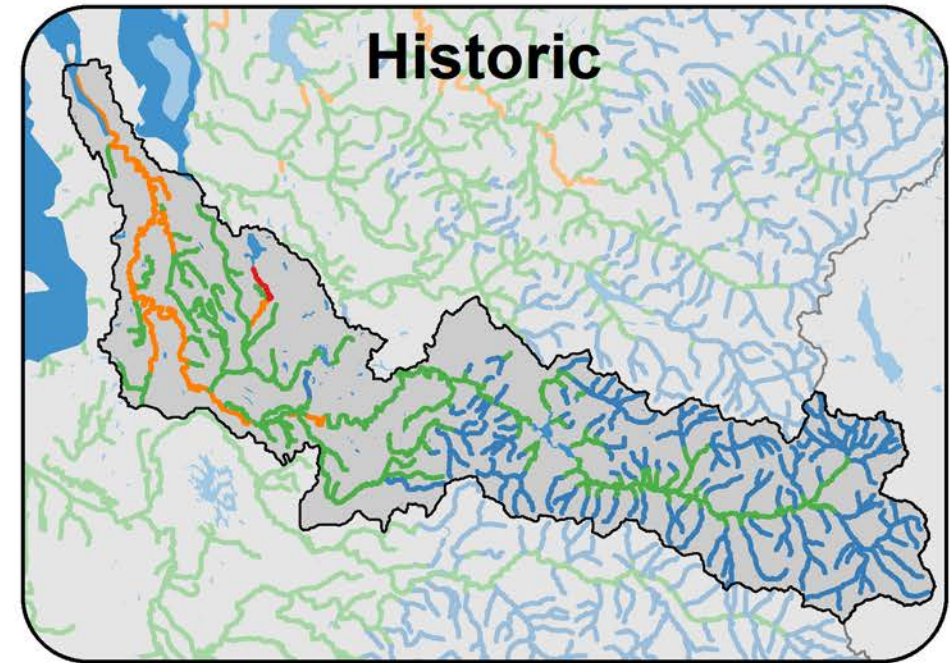
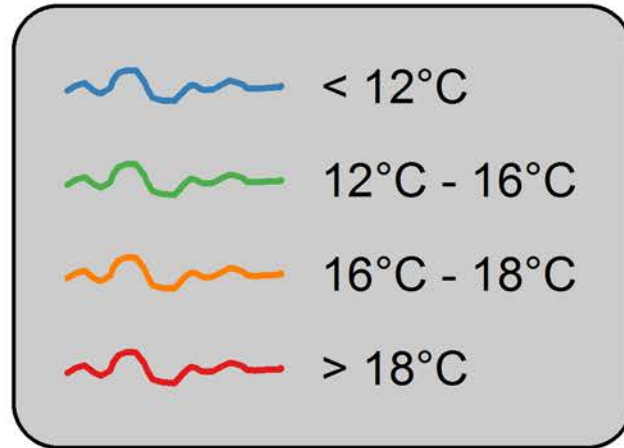
**2040s medium (A1B)**



*I'd like to  
replace  
with...*

By 2080 the #  
of river miles  
exceeding  
thermal  
tolerances  
increases by  
more than 70  
miles

## Stream Temperatures

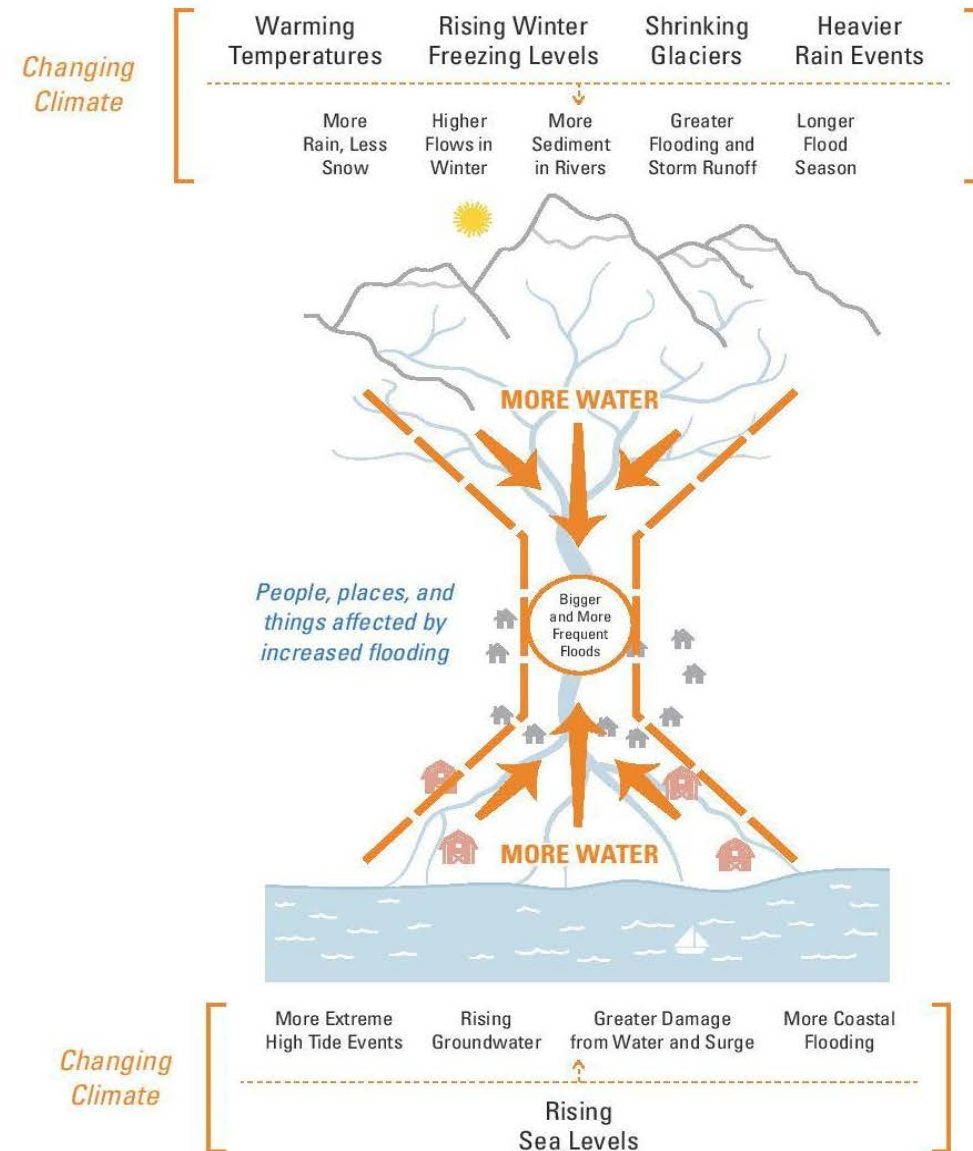


4<sup>th</sup>-this graphic was added in SLR section

This is a summary graphic for Climate Change in general. It is very 'busy'.

I do not believe it is appropriate to use here in SLR *and would like to delete.*

## Climate Change: Combining Forces



Still working on incorporating comments into Fish White Paper—Will bring back to next ITC meeting

