

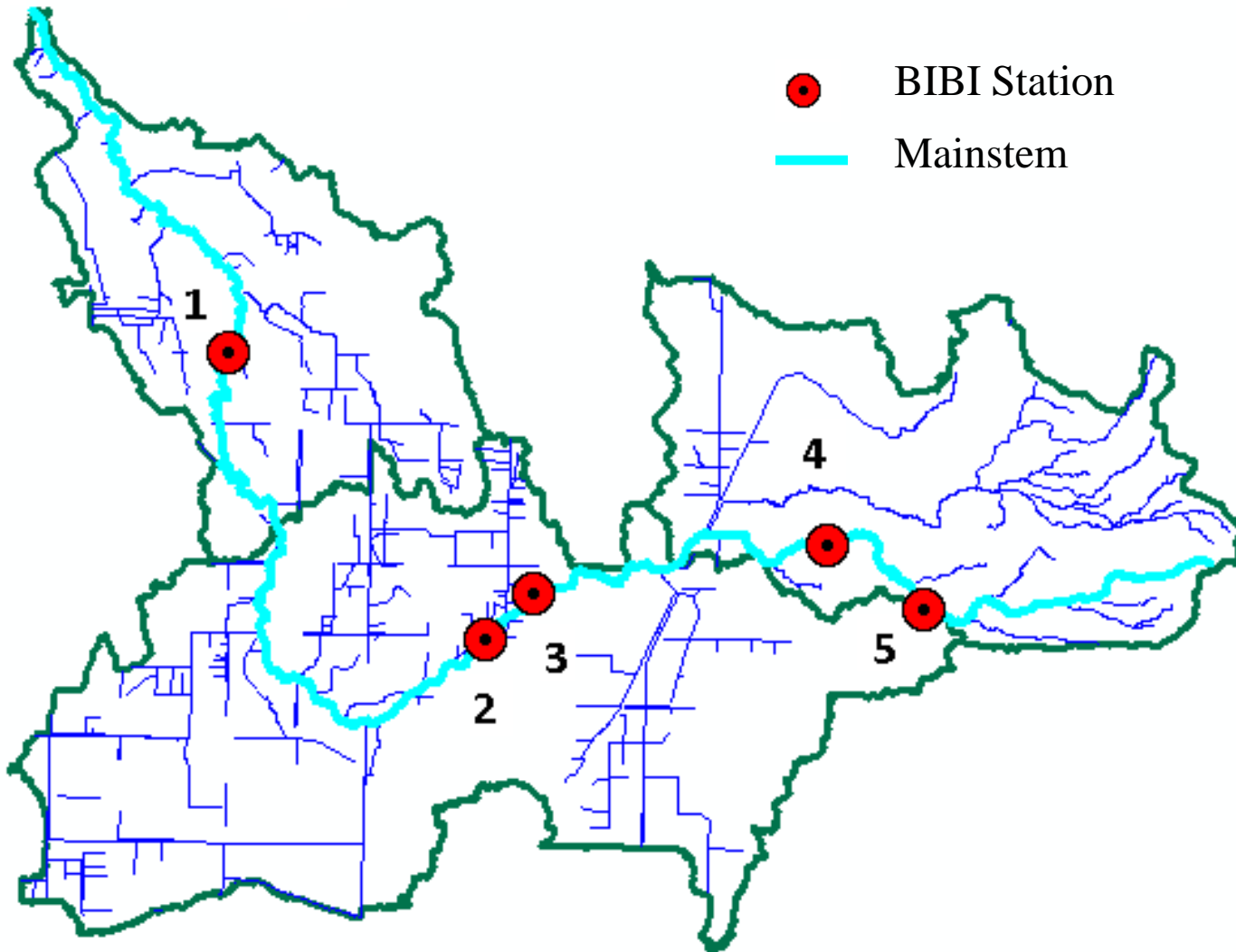
Are BIBI Scores Improving in Newaukum & Soos Tributaries?

All-3(Tier2) Protecting and improving access to tributaries will increase the quantity of available habitat, particularly for juvenile Chinook and coho salmon, and lead to expanded salmon spatial distribution, greater juvenile growth and higher survival



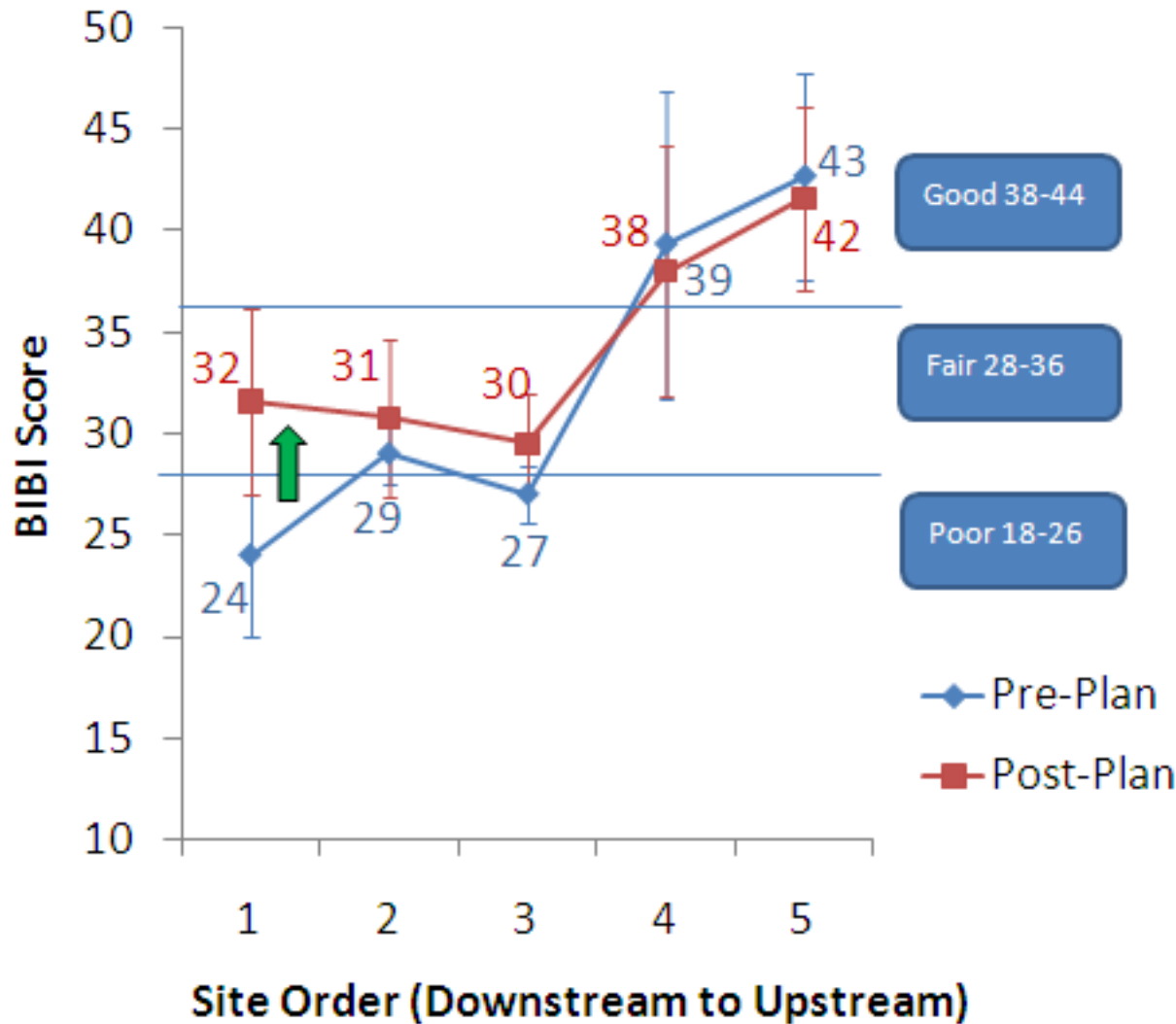
Presenter: Katherine Lynch, SPU

Newaukum Creek BIBI Sample Stations



8 yrs data
= 3 yrs
pre-plan,
5 yrs
post-plan

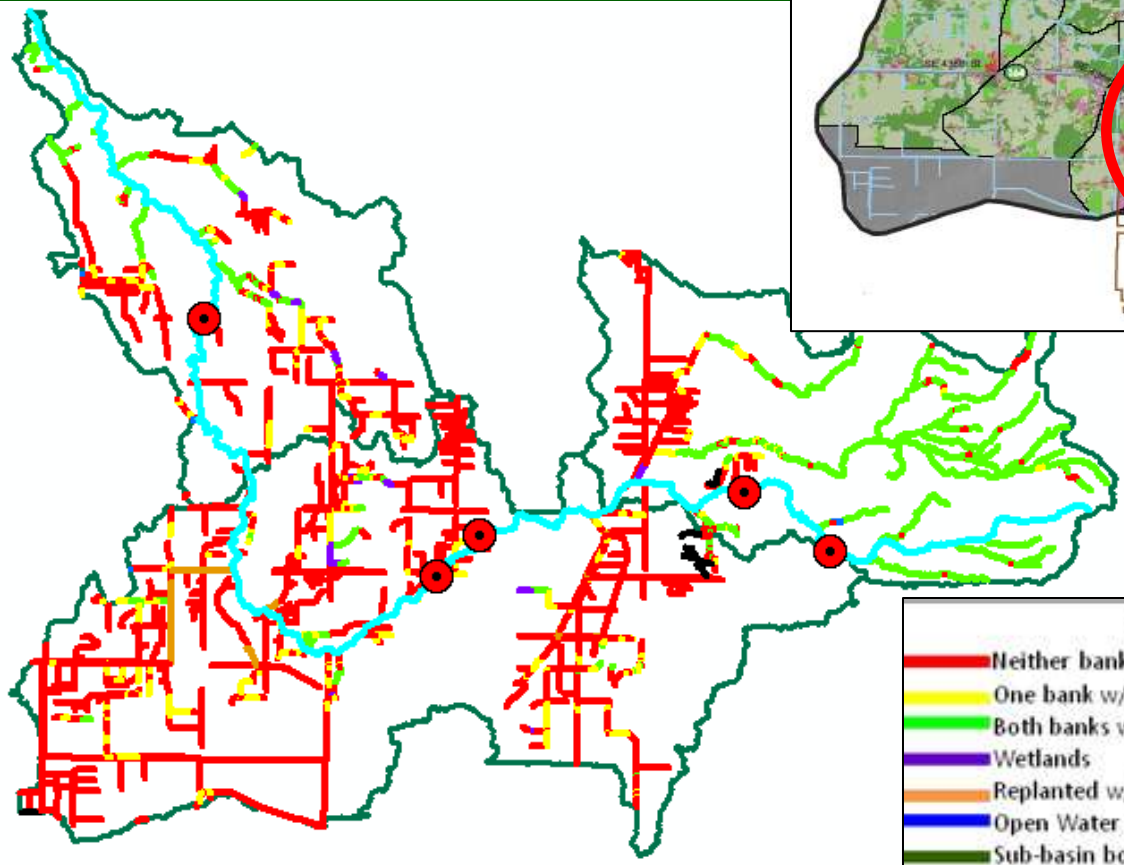
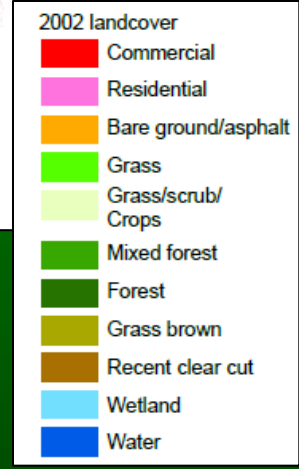
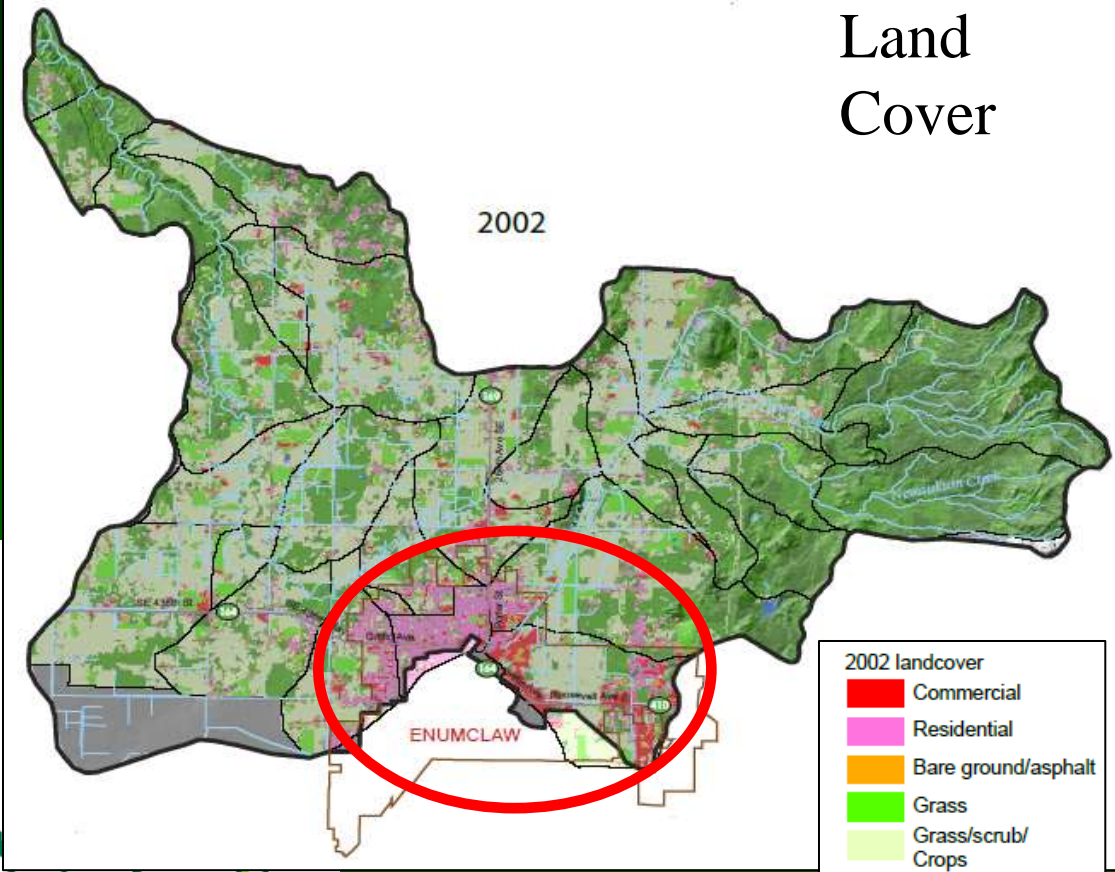
Newaukum Creek BIBI Results



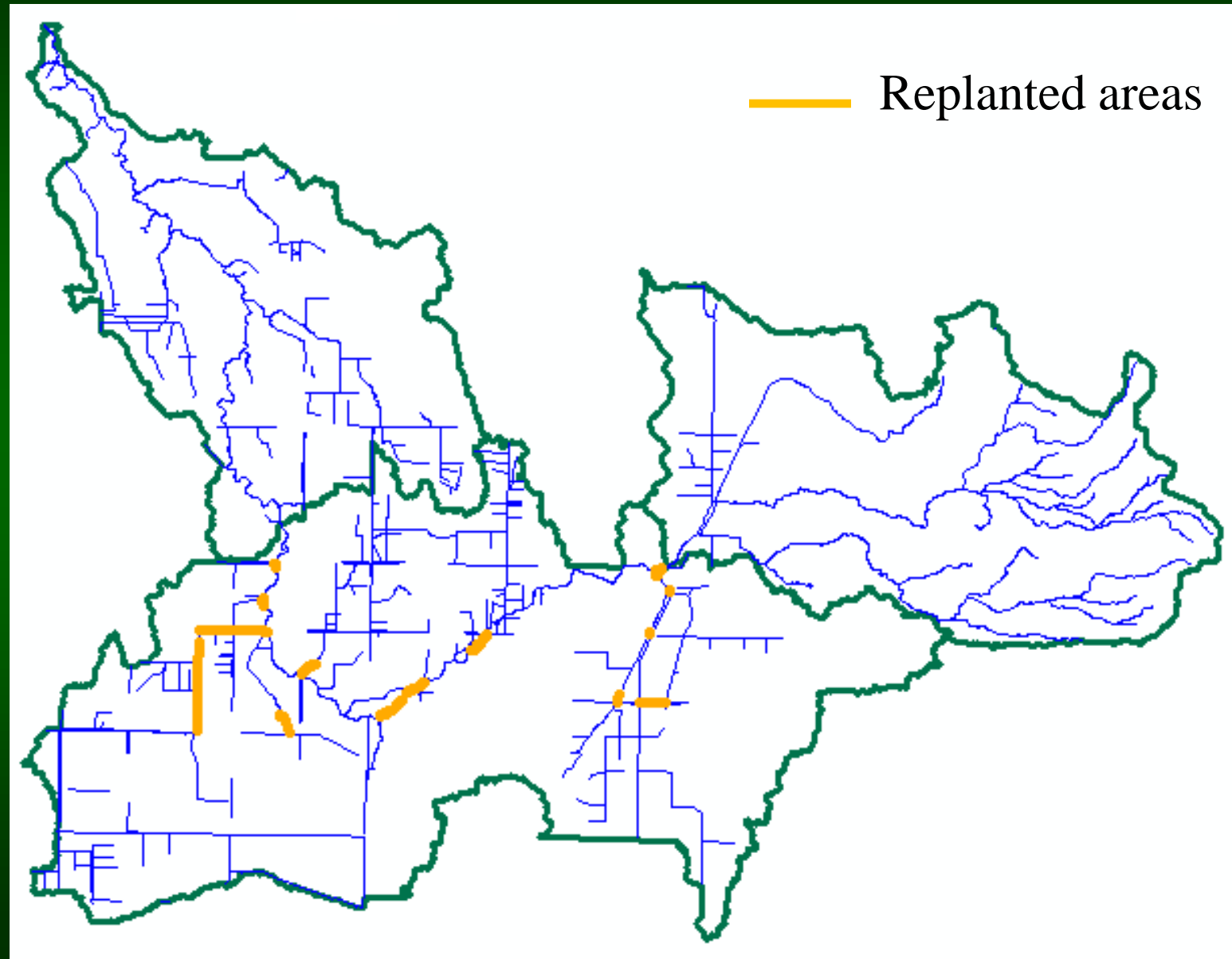
Yes - Slight improvement from Poor to Fair in Ravine (lower Newaukum Ck) after implementing WRIA 9 Habitat Plan in 2005

Newaukum Ck Land Use

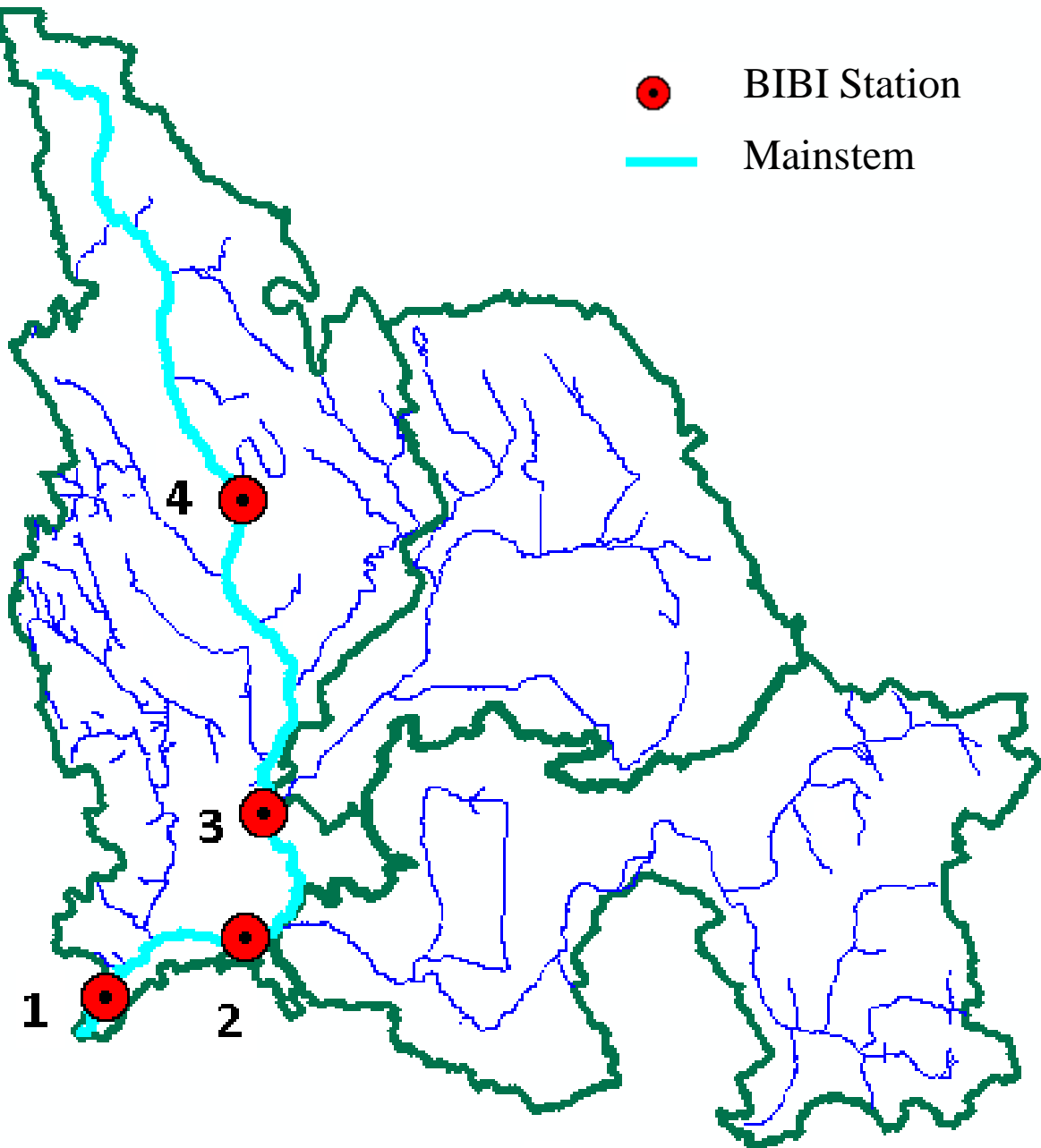
Land Cover



Newaukum Creek Replanted Areas

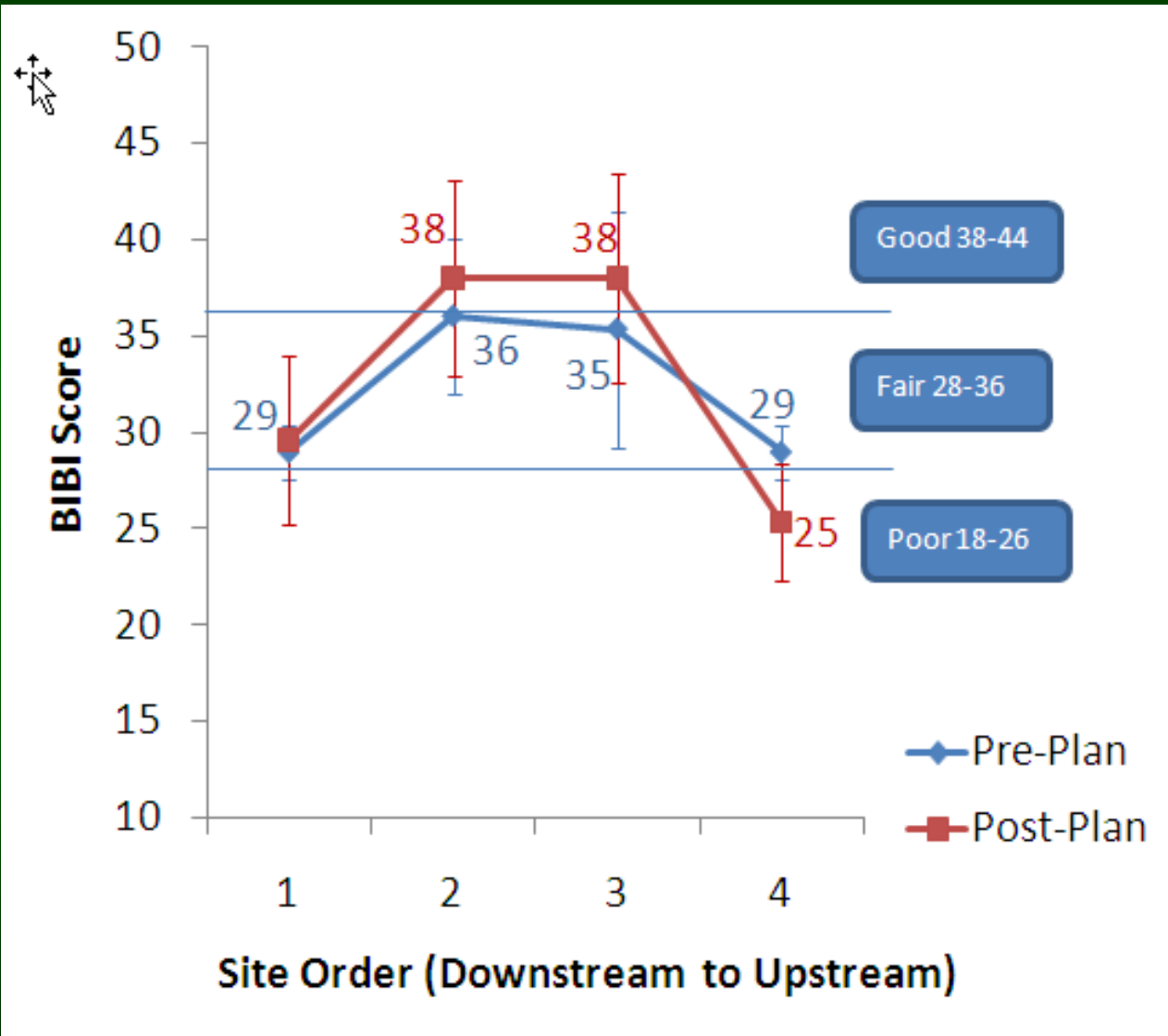


Soos Creek BIBI Sample Stations



8 yrs data
= 3 yrs
pre-plan,
5 yrs
post-plan

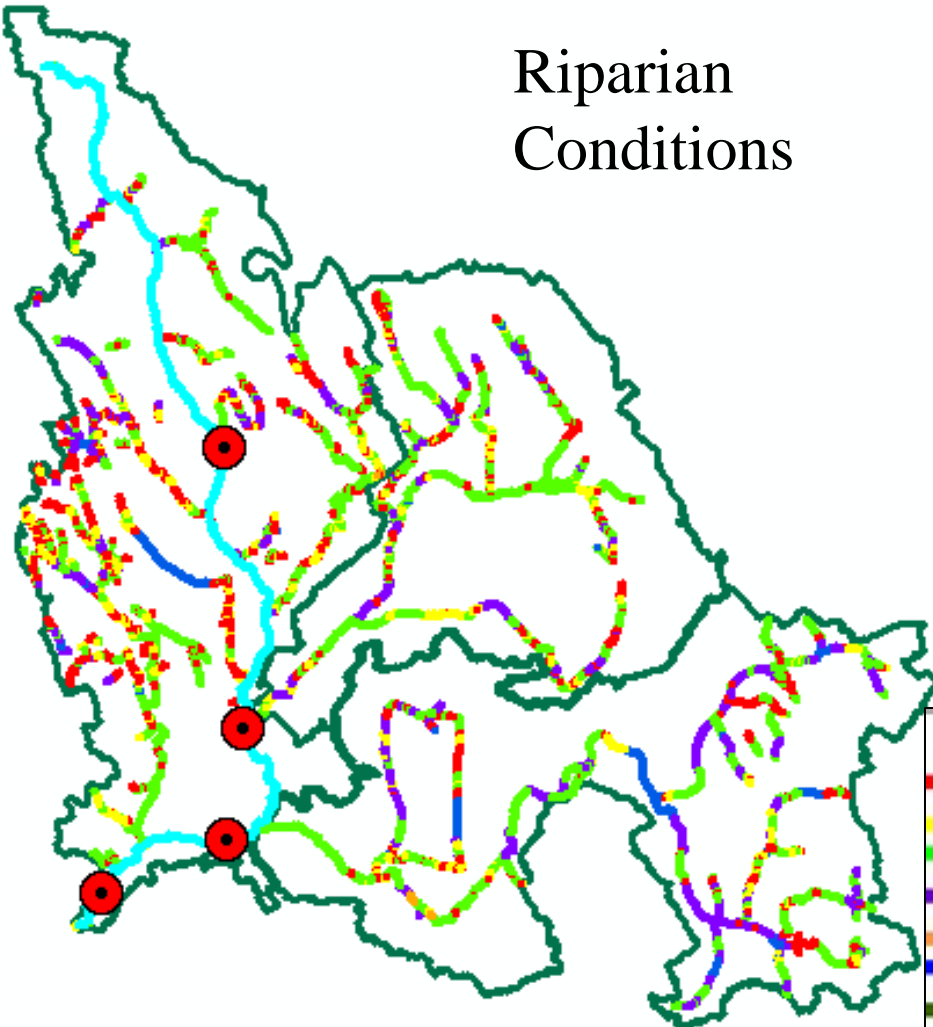
Soos Creek BIBI Results



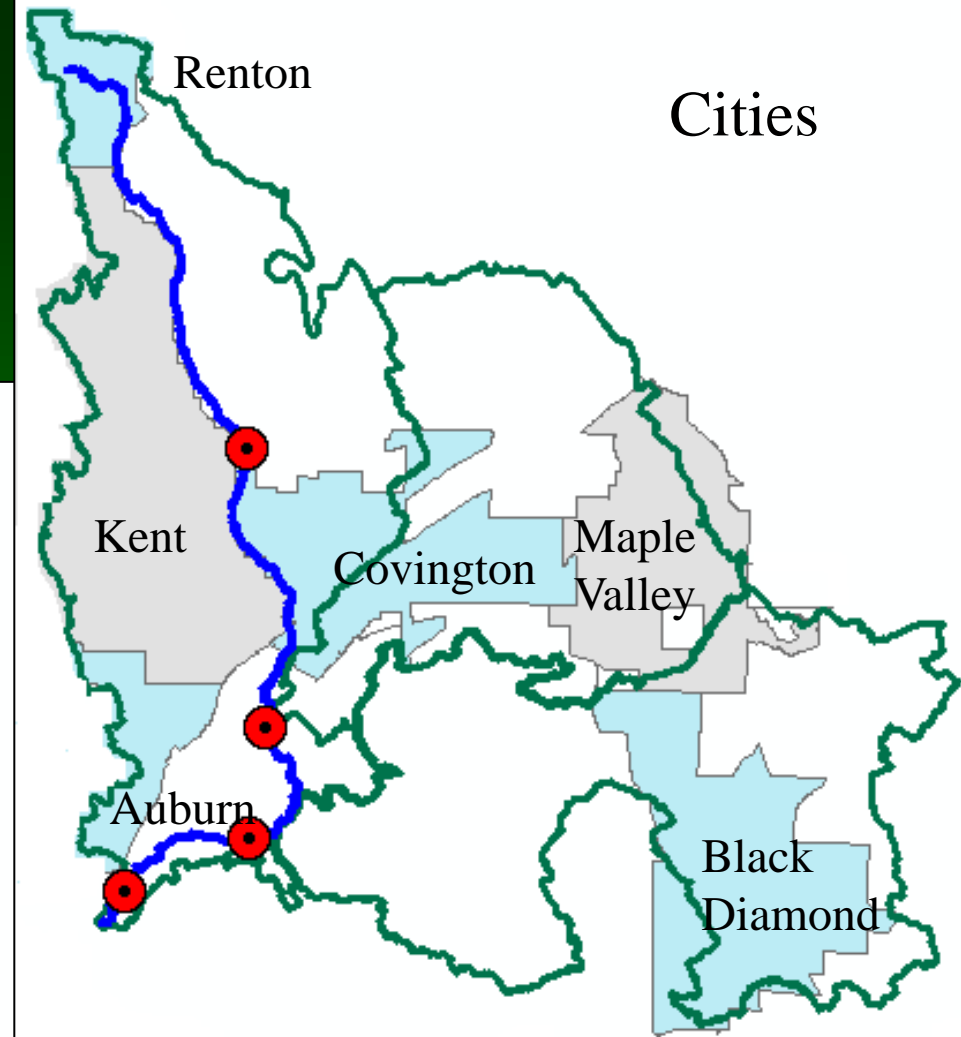
No significant change in overall BIBI scores after implementing the WRIA 9 Habitat Plan in 2005

Soos Creek WS Land Use

Riparian
Conditions



Cities



Legend

- Neither bank w/ tree canopy cover
- One bank w/ tree canopy cover
- Both banks w/ tree canopy cover
- Wetlands
- Replanted w/ trees
- Open Water
- Sub-basin boundaries

Conclusions



1. Both basins have fair to good BIBI scores, both tend to have higher scores upstream
2. The scores in both have been quite stable over last 8 years, with a slight improvement in lower Newaukum (ravine)
3. Land use suggests different strategies for each WS:
Soos - residential programs – backyard projects versus
Newaukum - work with agriculture doing more field/pasture restoration