

WRIA 8 CHINOOK CONSERVATION PLAN OVERVIEW

Salmon and People Living Together
Dec. 3rd, 2010

“WRIA 8?”

Water Resources
Inventory Area 8

AKA

Lake
Washington/
Cedar/
Sammamish
Watershed



WRIA 8
*Lake Washington/Cedar/
Sammamish Watershed*

- Water Resource Inventory Area (WRIA) boundary
- County boundary



Map produced by:
DNR/GIS, Visual Communications & Web Unit
File Name:
1011_WRImapReliefPT1a1.apr

King County
Department of
Natural Resources and Parks
Water and Land Resources Division

History

- Chinook listed under the ESA in 1999
- 27 local governments sign agreement to develop a salmon plan in 2000
- Began implementing the Near-Term Action Agenda immediately

History, cont.

- Plan was completed in 2005
- Approved by NOAA Fisheries in 2006
- New agreement was signed in 2006
- Now at 5 year mark – time for a Summit!

Leadership

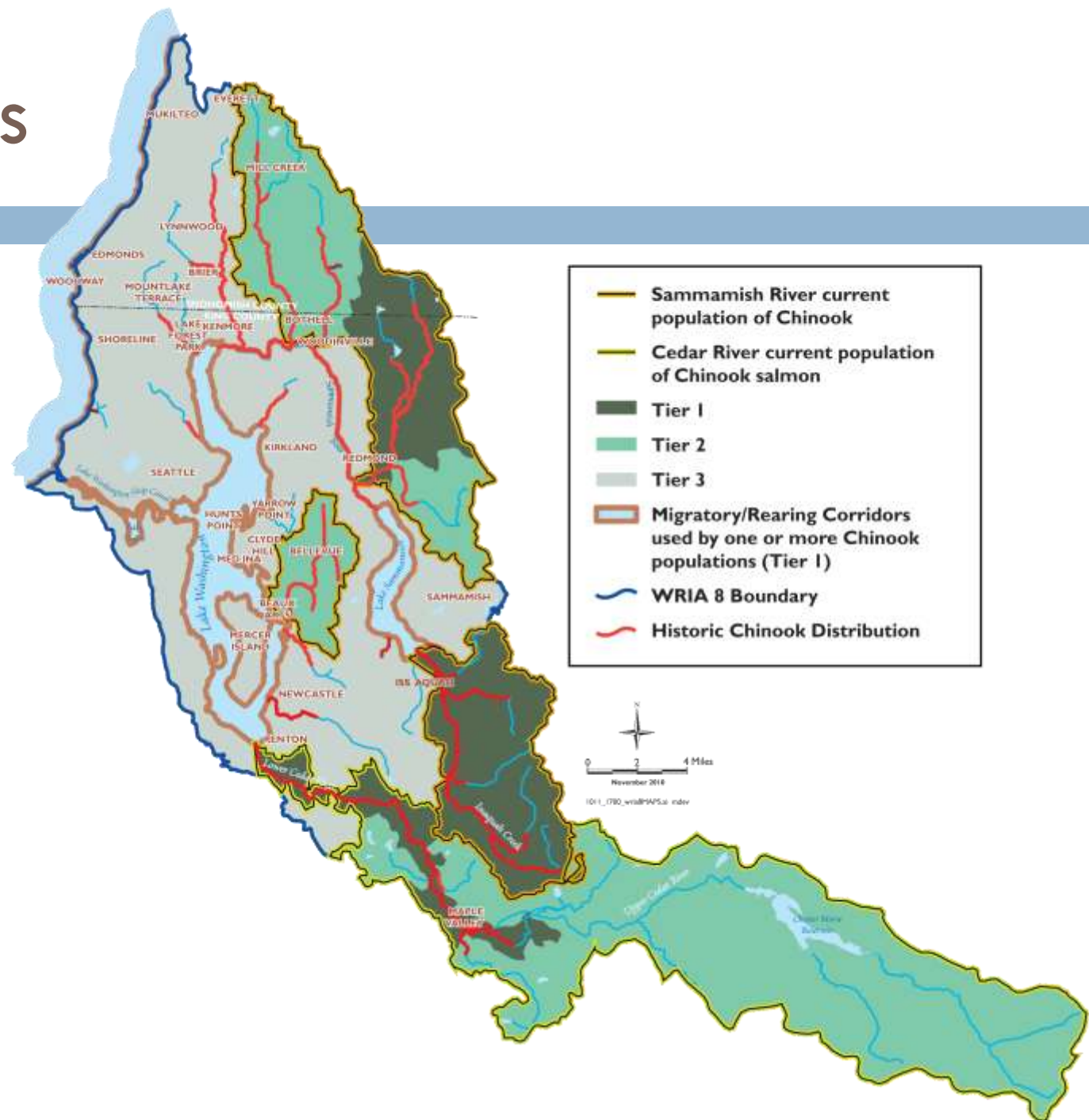
- The WRIA 8 Salmon Recovery Council oversees Plan implementation
- Comprised of: local elected officials, representatives of state and federal agencies, community groups and businesses and interested citizens

Priorities

Two Chinook Populations:

Cedar & Sammamish

Priority Areas for Salmon set through Tiers



What Needs to be Done Throughout the Watershed?

- Protect forests and mature vegetation
- Save & restore streamside vegetation
- Reduce impervious surfaces
- Manage stormwater flows



What Needs to be Done Throughout the Watershed?

- Keep wood in streams
- Protect & improve water quality
- Conserve water



What needs to be done in the Cedar?

Reconnect the river to its floodplain and create pools and side channels by removing or setting back levees.



What needs to be done in Bear Creek?



- Protect groundwater and wetland sources of cold, clean water.

What needs to be done in Issaquah Creek?

- Protect existing forests and habitat & improve fish passage.



Three Types of Actions

On-the-
ground
Projects



Three Types of Actions

Land use
and
Planning



Three Types of Actions

Education
&
Outreach

