



WRIA 8  
Lake Washington/Cedar/  
Sammamish Watershed

## King Conservation District and Salmon Recovery Board Projects 1999-2010

### State Funds - Salmon Recovery Funding Board (SRFB) Projects & Restoration (PSAR 2007 Onward) Projects:

- WRIA 8 Pre-Plan 1999-2004 SRFB Project
- WRIA 8 Post-Plan 2005-2010 SRFB/PSAR Project

### Local Funds - King Conservation District (KCD) Projects:

- WRIA 8 Pre-Plan 1999-2004 KCD Project
- WRIA 8 Post-Plan 2005-2010 KCD Project

### Chinook Populations and Watershed Evaluation Tiers

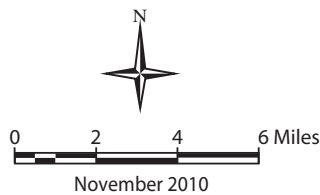
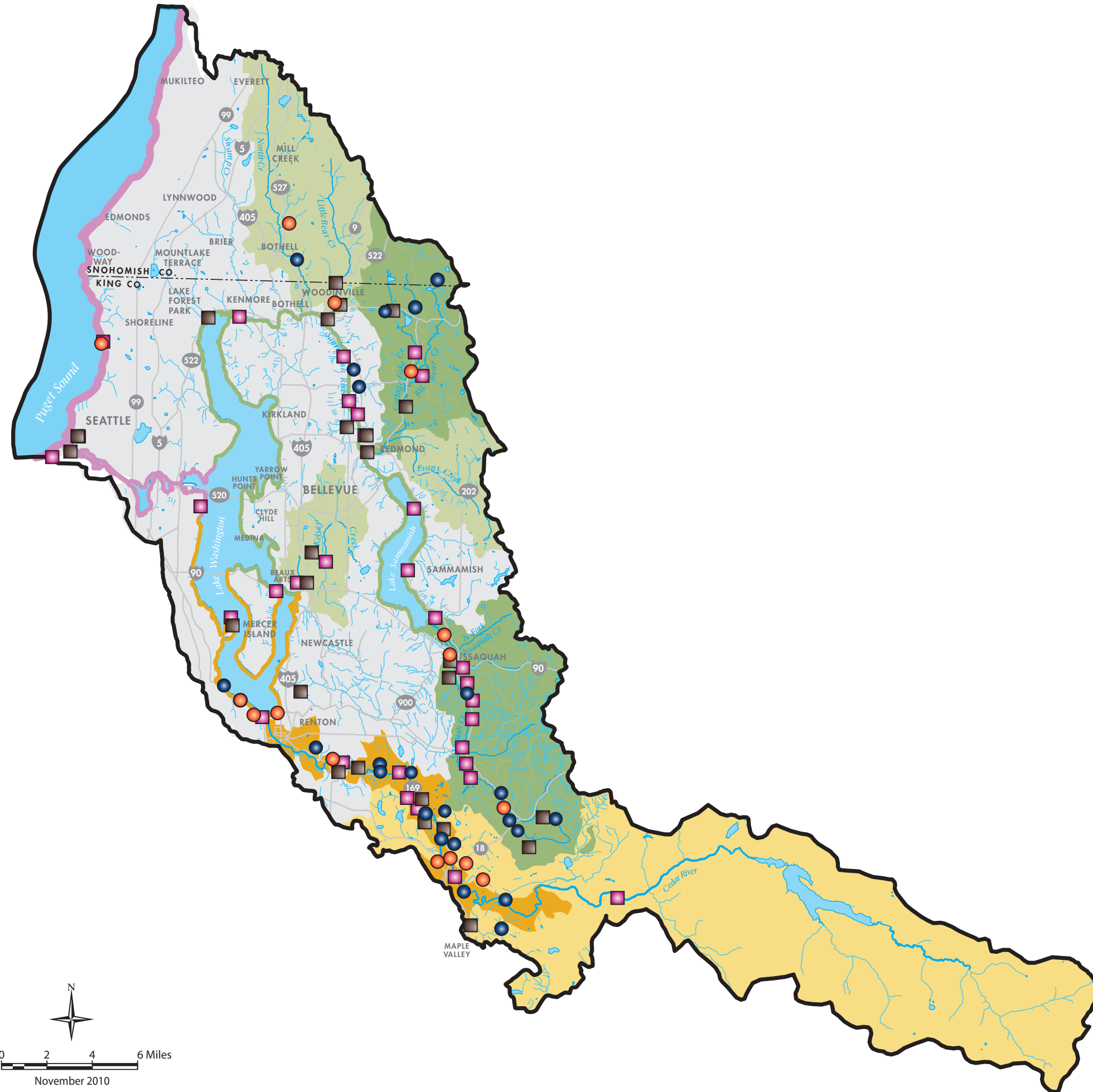
- |  |  |
|--|--|
| <b>Sammamish</b>   | <b>Cedar</b>   |
| <span style="color: green;">■</span> Tier 1                | <span style="color: orange;">■</span> Tier 1           |
| <span style="color: lightgreen;">■</span> Tier 2           | <span style="color: yellow;">■</span> Tier 2           |
| <span style="color: lightgreen;">—</span> Shoreline Tier 1 | <span style="color: orange;">—</span> Shoreline Tier 1 |

- Migratory**
- Migratory (Both Populations) Tier 1
  - WRIA 8 Tier 3

*Includes Tier 3 Chinook streams and other salmon-bearing streams not yet evaluated.*

### Other Symbols

- WRIA 8 Boundary
- River
- Streams of Interest
- Other Streams
- Major Road
- Water body



The information included on this map has been compiled by King County staff from a variety of sources and is subject to change without notice. King County makes no representations or warranties, express or implied, as to accuracy, completeness, timeliness, or rights to the use of such information. This document is not intended for use as a survey product. King County shall not be liable for any general, special, indirect, incidental, or consequential damages including, but not limited to, lost revenues or lost profits resulting from the use or misuse of the information contained on this map. Any sale of this map or information on this map is prohibited except by written permission of King County.

Map produced by:  
DNRP GIS, Visual Communications &  
Web Unit

File Name:  
1008\_W8srfb-kcdMAPall.ai LPRE, wgab

**King County**  
Department of  
Natural Resources and Parks  
**Water and Land Resources Division**