

South Central Action Area Caucus Group Meeting

September 20, 2022 | 3:00 – 5:00 PM

Online Only

AGENDA

Time	Topic	Lead/Action	Resources
3:00 – 3:10 <i>(10 mins)</i>	Welcome & Introductions	Chair	Agenda
3:10 – 3:50 <i>(40 mins)</i>	Good of the Order Member Updates <ul style="list-style-type: none">• Updates since last meeting• ERC Updates• PSP Updates• BIL funding Updates• Member Updates	Chair, facilitator, and Caucus Members <i>Information</i>	
3:50 – 4:35 <i>(45 mins)</i>	2022-2025 Workplan Discussions <ul style="list-style-type: none">• Review draft workplan as full group• Transition to small breakout groups to discuss	Facilitators <i>Information and decision</i>	Draft Workplan and Operating Guidelines – included in meeting packet
4:35 – 4:55 <i>(15 mins)</i>	Full Group Share Out <ul style="list-style-type: none">• Breakout room highlights and takeaways (round-robin)	Facilitators	
4:55 – 5:00 <i>(5 mins)</i>	Wrap Up & Adjourn	Chair	

South Central LIO Draft Work Plan 2022-2025

Prepared by the LIO coordinator team, September 2022

Work Plan Purpose

The purpose of the South Central Local Integrating Organization (LIO) Work Plan is to identify the activities that will align member priorities and create a collective impact to support watershed based recovery of Puget Sound. The South Central LIO Recovery Plan outlines recovery goals within the watershed. This work plan outlines the tasks that will lead the LIO to achieving those recovery goals. The South Central LIO is one of ten LIOs within the Puget Sound and is supported by the Puget Sound Partnership (Partnership) through contracts for LIO support.

Work Plan Goals

South Central LIO fulfills several goals outlined in the Partnership's contract with King County and supported through an LIO Coordinator contract with Cascadia Consulting Group. Specifically, South Central LIO:

- 1) Serves as a coordination and integrating forum for information sharing about innovative local approaches to implement the Action Agenda and advance Puget Sound recovery.
- 2) Elevates the LIO's perspectives at the regional level by providing input on important topics, i.e., development of the Action Agenda.
- 3) Advances regional recovery through events, such as the regional Stormwater Summit and Education, Communication, and Outreach Network (ECO Net).
- 4) Continues to make progress on the South Central LIO Ecosystem Recovery Plan and create measurable strategies to advance recovery plan goals.
- 5) Fulfills our reporting requirements related to Action Agenda progress.

The 2022 LIO Coordination contract extended from one to three years, providing the opportunity to develop a 3-year work plan with longer term activities, as described in the next section.

Work Plan Development

To develop the 2022-2025 work plan, the South Central LIO coordinator team solicited input in one-on-one meetings with regularly participating LIO members in August-September 2022*. The following describes activities that emerged from those conversations. They are presented in five primary tasks:

- 1) an analysis of diversity, equity, & inclusion (DEI) goals, gaps, and strategies,
- 2) continued connection and coordination exploring the nexus between various topic areas including stormwater and salmon, land-use and habitat – identifying emerging opportunities for better integration, and integrating and leveraging opportunities to incorporate DEI,
- 3) support for the regional, multipart Stormwater Summit 2.0,
- 4) developing recommendations to support BIL funding, and
- 5) ECONet training.

The LIO will discuss and prioritize these tasks at our LIO meeting on September 20, 2022. The LIO coordinator team will finalize the work plan (i.e., develop a timeline and budget) based on that input, with the intent to implement initial tasks, as budget allows, from October 1, 2022 to September 30, 2023 (aligned with the federal fiscal year), and scope ongoing or follow-on tasks for years 2 & 3 (October

1, 2023 – September 30, 2025). Toward the end of the federal fiscal year, LIO members will discuss progress and determine priorities and next steps based on activities accomplished to date.

Task	Description
Background	<p>The LIO coordinator team interviewed LIO members to:</p> <ul style="list-style-type: none"> • Better understand the synergies and gaps between the goals and interests of the LIO and each organization’s planned activities and focus areas. • Present proposed projects at the intersection of equity, salmon, and stormwater that we hope to advance in the coming year. • Gather input on the proposed project ideas. • Learn more about and inventory existing projects / programs / efforts in this space.
<h2 style="color: #4F81BD;">Diversity Equity & Inclusion (DEI)</h2>	
<p>1. Conduct DEI (aka equity & environmental justice) project and program review</p>	<p>Conduct a review of salmon and ecosystem recovery and stormwater retrofit projects and programs in South Central LIO geography to identify equity considerations, e.g., create a baseline and reflect on current state, ultimately to build upon and make progress toward more equitable projects, programs, and outcomes</p> <p>Specific activities will include:</p> <ul style="list-style-type: none"> • Conduct a literature review of existing DEI-related plans, criteria, strategies, and evaluation efforts to understand goals, progress and outcomes related to DEI thus far. • Review project and program processes (selection, goals, audience, outcomes). Identify through mix of websites, documents/reports, interviews, meetings/workshop, survey, etc. • Key questions for projects/programs may include: <ul style="list-style-type: none"> ○ What organizations apply for and receive funding and/or deliver programming? (e.g., racial composition) ○ Do project/program objectives and goals include equity? ○ How is DEI described and presented? i.e., are we asking about community/organization priorities or telling them the priorities and asking how they can meet them? ○ Who are projects/programs intended to serve? Do project/program outcomes benefit the community? ○ Did the project/program design and/or implementation include community engagement or a co-design effort to solicit input from the community? ○ What are the perceived barriers, challenges, and opportunities to integrating DEI in salmon/stormwater, etc.?
<p>2. Compile list of DEI-focused organizations and gather information</p>	<p>Use existing resources such as currently funded partners, Department of Neighborhoods community overviews, and websites to compile a comprehensive list of organizations located in South Central that are focused primarily on DEI and community. Coordinate closely with concurrent efforts to share information, learn, and streamline outreach.</p> <ul style="list-style-type: none"> • Gather information via website research and interviews to better understand:

	<ul style="list-style-type: none"> ○ Project and program goals and priorities ○ Target audience for project/program ○ Intersection of work related to the environment (e.g., health, contaminants, air quality, food access, ecosystems) ○ Awareness and interest in funding opportunities related to salmon, stormwater, and ecosystem restoration and protection. ○ Perceived barriers, challenges, and opportunities for connecting to salmon/stormwater projects and programs. ○ Potential intersections between DEI & community work and ecosystem recovery & protection work. Could include, for example, 1) how priorities are identified and discussed that could lead to better integration, for example, shared priorities may include heat impacts, health issues, water quality, and 2) partner and network mapping element, i.e., who and how organizations and projects/programs are working together and/or potential to collaborate.
<p>3. Summarize research</p>	<p>Summarize findings, including:</p> <ul style="list-style-type: none"> ● Status of DEI in projects: Who’s benefitting from salmon recovery and stormwater projects; who’s being impacted by them? ● Identify common threads or co-benefits between salmon and stormwater projects and community DEI work. ● Assess and identify differences in structure, goals/priorities, application and communication norms and methodologies to better facilitate collaboration between DEI and ecosystem projects and programs. ● Identify resources, tools, and strategies to facilitate connection and integration opportunities. ● Identify potential examples where projects have integrated DEI in salmon and Puget Sound recovery and stormwater management work (e.g., Be’er Shiva project in WRIA 8: Seattle Parks Foundation — Be’er Sheva Lake Access)
<p>4. Conduct education about findings and strategies</p>	<p>Share and reflect on results with LIO members and identify needs going forward. May include:</p> <ul style="list-style-type: none"> ● Discuss and scope (for years 2-3) a comprehensive toolkit based on the findings and discussion including database of existing tools, resources, language translation/transcreation info. ● Conduct a workshop/webinar to discuss results from activities 1-5 and identify needs and pathways forward ● Conduct a training session to share findings related to the intersections and collaboration opportunities between DEI and ecosystem projects and programs. Invite broad participation. Note: this could be conducted as a follow-up to the Stormwater Summit.

<p>Integration: Stormwater-Salmon, Land-Use-Habitat</p>	
<p>1. Continue discussions around better integration between stormwater and salmon recovery**, and between both with DEI</p>	<p>Lead discussions at LIO meetings to share information, make connections, coordinate, and provide updates on activities that better integrate salmon recovery and stormwater projects and programs in South Central, and both with DEI. This may include sharing and conducting presentations on:</p> <ul style="list-style-type: none"> • Mapping tools to identify priority areas for project implementation • Stormwater integration in Comprehensive Planning • Case studies, management, impacts, and outcomes • Monitoring and implementation efforts • Sockeye projects (Seattle focus) • Impacts of tires on water quality and salmon mortality
<p>2. Discuss integration and information sharing opportunities related to land-use and habitat</p>	<p>Lead discussions at LIO meetings to share information, make connections, coordinate, and provide updates on activities related to land-use and habitat, and integration with other areas of focus, i.e., salmon recovery</p>
<p>Stormwater Summit</p>	
<p>Background</p>	<p>Summit 2.0 will build on the outcomes of the 2021 Stormwater Summit, which brought together stormwater practitioners, elected officials, regional thought leaders, and a variety of community leaders from staff of cities, counties, tribes, public agencies, and nonprofits to begin exploring a more cohesive, cooperative approach to managing stormwater regionally by:</p> <ul style="list-style-type: none"> • Exploring various frameworks for codifying regional commitments • Reviewing examples of shared accountability and metrics • Exploring co-design as a framework to operationalize this work as a regional coalition <p>Summit 2.0 will be a follow up to the Stormwater Summit held in 2021. Summit 2.0 will consist of two events:</p> <ul style="list-style-type: none"> • <i>November 2022</i>: Technical workshop and focus group on regional goals setting <ul style="list-style-type: none"> ○ Identify regional goals and barriers ○ Get clarity on what goals to present at Summit 2.0 • <i>February 2023</i>: Summit itself focused on celebrating those regional goals and coalition building.
<p>1. Support Summit development</p>	<p>Provide input and partnership on development, content creation, and planning for Summit 2.0. includes:</p> <ul style="list-style-type: none"> • Coordinate with LIO members to support summit content development and review • Bring forward recommendations such as presentation from City of Issaquah on watershed-based stormwater management and planning
<p>2. Host supporting events</p>	<p>Host supporting workshop or other related event as determined in partnership with King County and LIO members. Could include training</p>

	session on intersections between DEI and ecosystem programs and projects as described in Task 6 above.
BIL Funding Support	
1. Developing recommendations to support BIL funding	<p>Develop key concepts and recommendations to facilitate BIL-related funding applications.</p> <ul style="list-style-type: none"> • Provide succinct summaries of key opportunities in South Central in the areas of ecosystem recovery and DEI that address or are related to BIL funding solicitations. • Share outcomes at the regional scale to facilitate connection and watershed-scale engagement and implementation. • Coordinate previously supported strategies such as addressing shoreline armoring, as appropriate, to facilitate continued LIO support and secure follow-on funding.
ECONet Training	
1. Conduct training	Survey ECONet members and develop a training based on interests, likely DEI related.

Additional Input

Research and identify opportunities related to houselessness and ecosystem recovery

Explore intersections and impacts of houselessness on ecosystem recovery, protection, and water quality/contamination. *Note: potentially scope during year 1 and implement during years 2-3.*

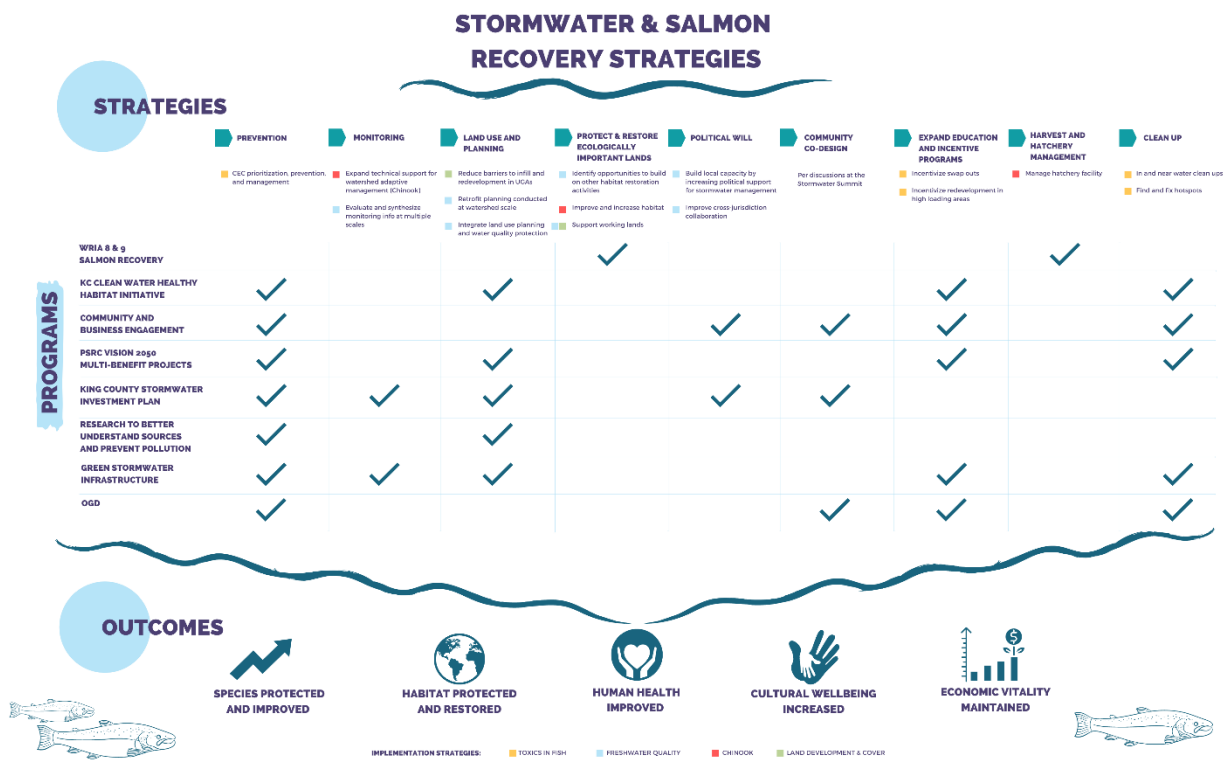
- Gather and summarize observations to better understand scale and impacts of houselessness on restored and protected properties and impacts of restoration on the houseless community
- Conduct research, via meeting summaries and interviews, to better understand perspectives from the houseless community as well as current efforts to address, mitigate, and establish programs to address the needs of houseless communities
 - What is working? How did it work? What are the outcomes? Are there opportunities for employment?
 - Learn more about Houselessness in Natural Areas (Hannah Buehler, hbuehler@b-e-f.org), Duwamish Alive Coalition (Sharon Leishman, s.leishman76@gmail.com)
 - Example: [King County jobs-housing-parks](#)

*Regularly participating LIO members currently represent the following organizations:

- City of Seattle
- Green Duwamish Urban Waters Partnership
- King Conservation District
- King County Watershed Stewardship (Bear Creek)
- Mid Sound Fisheries
- Our Green Duwamish

- Puget Sound Regional Council
- WRIA 8
- WRIA 9
- Zero Waste Washington

** South Central LIO developed the graphic below in 2021 to summarize coordination discussion regarding stormwater management and salmon recovery strategies.



South Central Local Integrating Organization Operating Guidelines

Revised September 2022; removed reference to Near Term Actions to reflect EPA and Partnership changes in funding structure.

Purpose of LIO:

The South Central LIO is one of ten LIOs within the Puget Sound, and is supported by the Puget Sound Partnership (Partnership) through annual contracts for LIO support.

The purpose of the South Central Local Integrating Organization (LIO) is to recover the ecosystem in the South Central Puget Sound area. The LIO will do this, in part, by helping to refine and confirm Action Area priorities and implementation strategies using input from constituents, and to help identify opportunities to become more efficient and effective through coordination and integration of Puget Sound recovery efforts.

Membership:

When established, the vision of the SC LIO membership was inclusive of broad representation of constituencies including agricultural, environmental, tribal, business, public health, cities, counties, and the Port. Today's goal is still broad representation. To pursue this goal, the LIO will engage, i.e. notify, invite, and follow-up as appropriate, with a broad list of interested parties when hosting deep dive discussions, summits, and EcoNet events. Only actively participating members (attending at least two meetings per year) will be included in decision-making, such as providing input on meeting agendas, approving meeting summaries, and determining funding recommendations.

Meetings and Meeting Ground Rules:

LIO meetings will:

- Focus on reviewing and acting on timely information and ideas brought forward by work groups/subcommittees, giving further direction to work groups/subcommittees, and crafting outcomes in the form of advice and recommendations to the Partnership.
- Occur at least quarterly, prior to Ecosystem Coordination Board (ECB) meetings. As necessary, more frequent meetings may be scheduled.
- Be based on meeting agendas and materials that are distributed in a timely fashion, and at least a week prior to meetings.
- Be planned and managed by the Chair in consultation with supporting staff and work groups/subcommittees.
- Function with LIO members agreeing to interact with each other with respect, and with a focus on trying to find creative, collaborative ways to maximize the interests of each participant.
- Update and inform the action area representative to the Ecosystem Coordination Board (ECB).

- Be chaired by the South Central Action Area ECB representative, or other LIO member as designated by the group.
- Operate transparently, including regular communication with constituencies, use of email distribution lists for materials and meeting announcements, etc.
- Communicate constituent concerns and input with LIO and communicate LIO discussions with constituents.

Creation of work groups/subcommittees:

The LIO may decide to form work groups/subcommittees, comprised of interested LIO participants, on specific topics or issues to enable more detailed discussion or development of a draft work product in preparation for presenting it to the full LIO.

Decisions:

Decisions will be made with efficiency and fairness. LIO participants recognize there is a direct relationship between the strength of local implementation of the Action Agenda and the number of participants who can agree on recommendations and advice to the Partnership for local implementation of the Action Agenda. Therefore, the LIO will strive for consensus on advice and recommendations to the Partnership. Consensus will be defined as the lack of dissent.

In the absence of consensus, a majority of members present at any meeting of the LIO will prevail. Minority opinions, along with the reason for the dissent, will be noted in any advice or recommendations submitted to the Partnership. The Chair will be responsible for gauging the degree of consensus, and for calling the question to vote. The LIO may authorize the Chair to communicate advice and recommendations to the Partnership on its behalf, expressing the concerns, desires, and opinions of the LIO regarding local implementation of the Action Agenda.