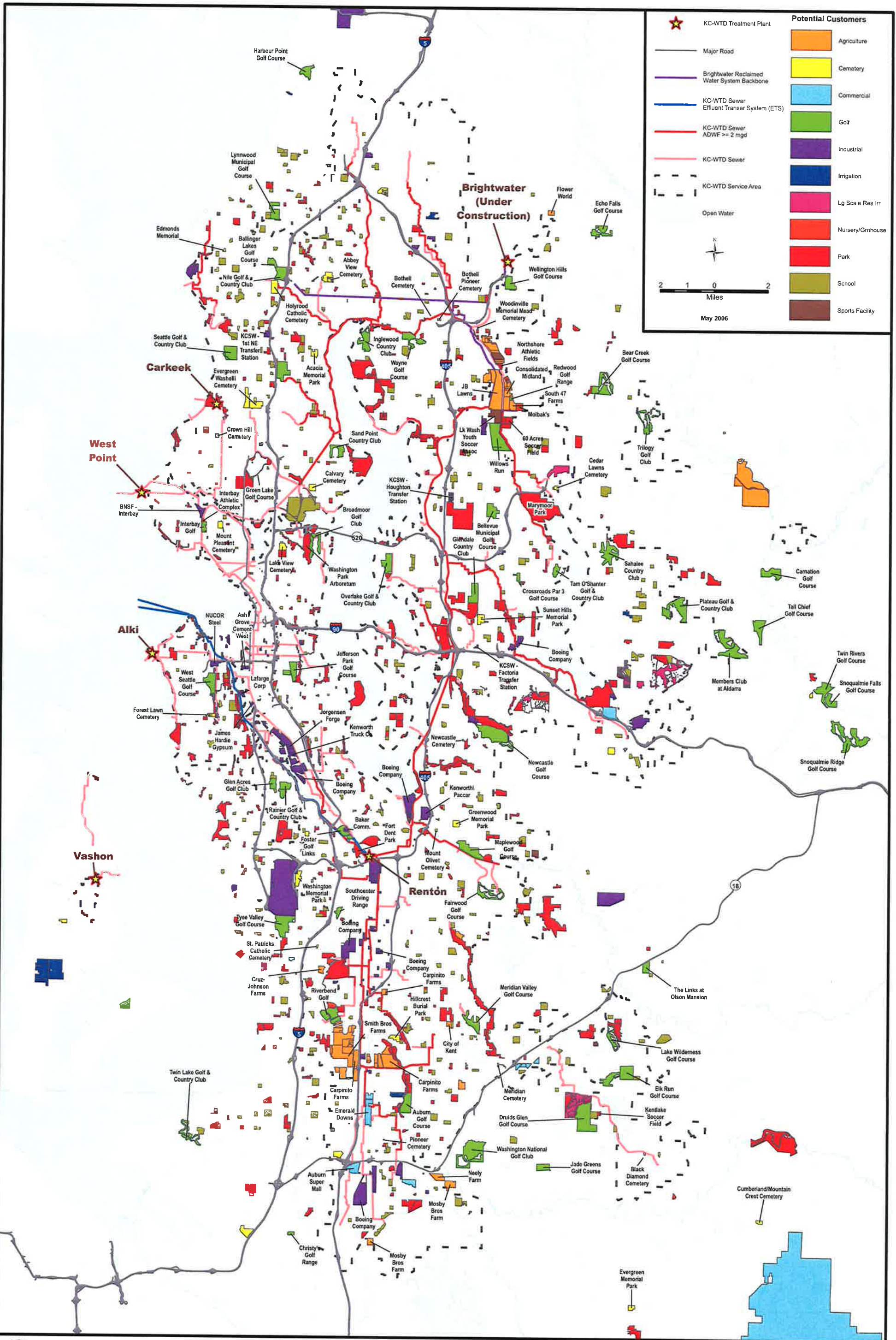


## APPENDIX B

### Maps of Reclaimed Water Sources and Potential Users of Nonpotable Water

King County GIS data was used to identify land uses that could need irrigation water. All committee members were invited to provide additional data on potential users in their districts, including industrial customers, water-dependent businesses, and irrigators. The following members provided data: Covington Water District, Sammamish Plateau Water & Sewer, Seattle Public Utilities, City of Tukwila, and City of Bothell. See the attached spreadsheet for detail.



**Potential Customers**

	Agriculture
	Cemetery
	Commercial
	Golf
	Industrial
	Irrigation
	Lg Scale Res Irr
	Nursery/Gnhouse
	Park
	School
	Sports Facility

KC-WTD Treatment Plant  
 Major Road  
 Brightwater Reclaimed Water System Backbone  
 KC-WTD Sewer Effluent Transfer System (ETS)  
 KC-WTD Sewer ADWF >= 2 mgd  
 KC-WTD Sewer  
 KC-WTD Service Area  
 Open Water

2 1 0 2  
 Miles  
 May 2006



